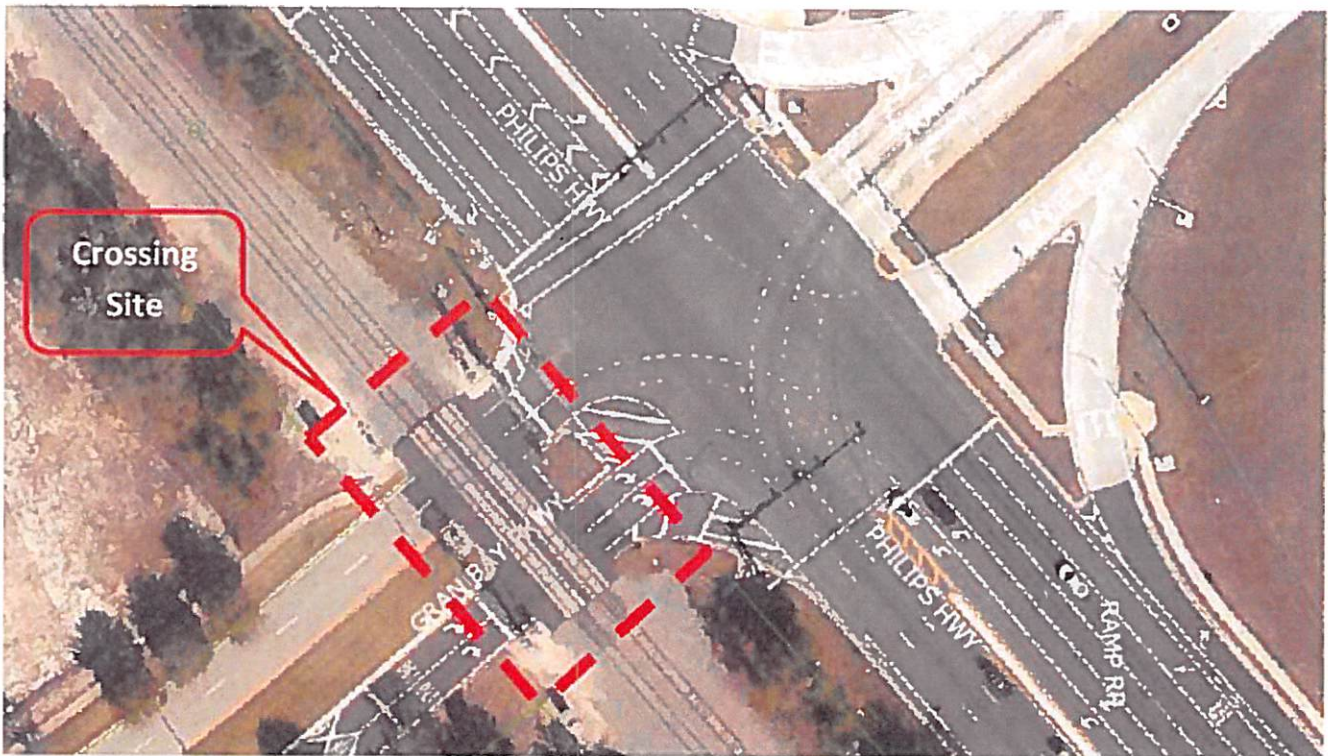
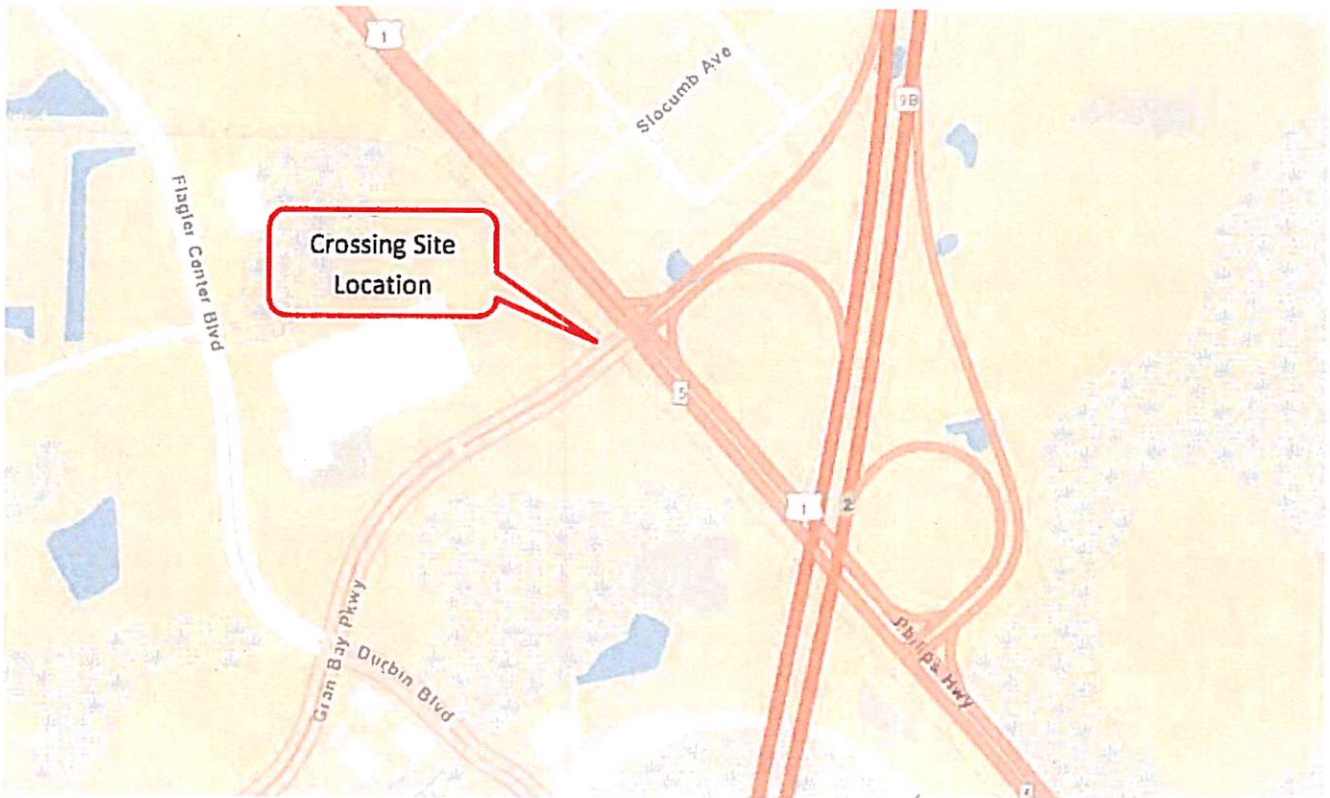
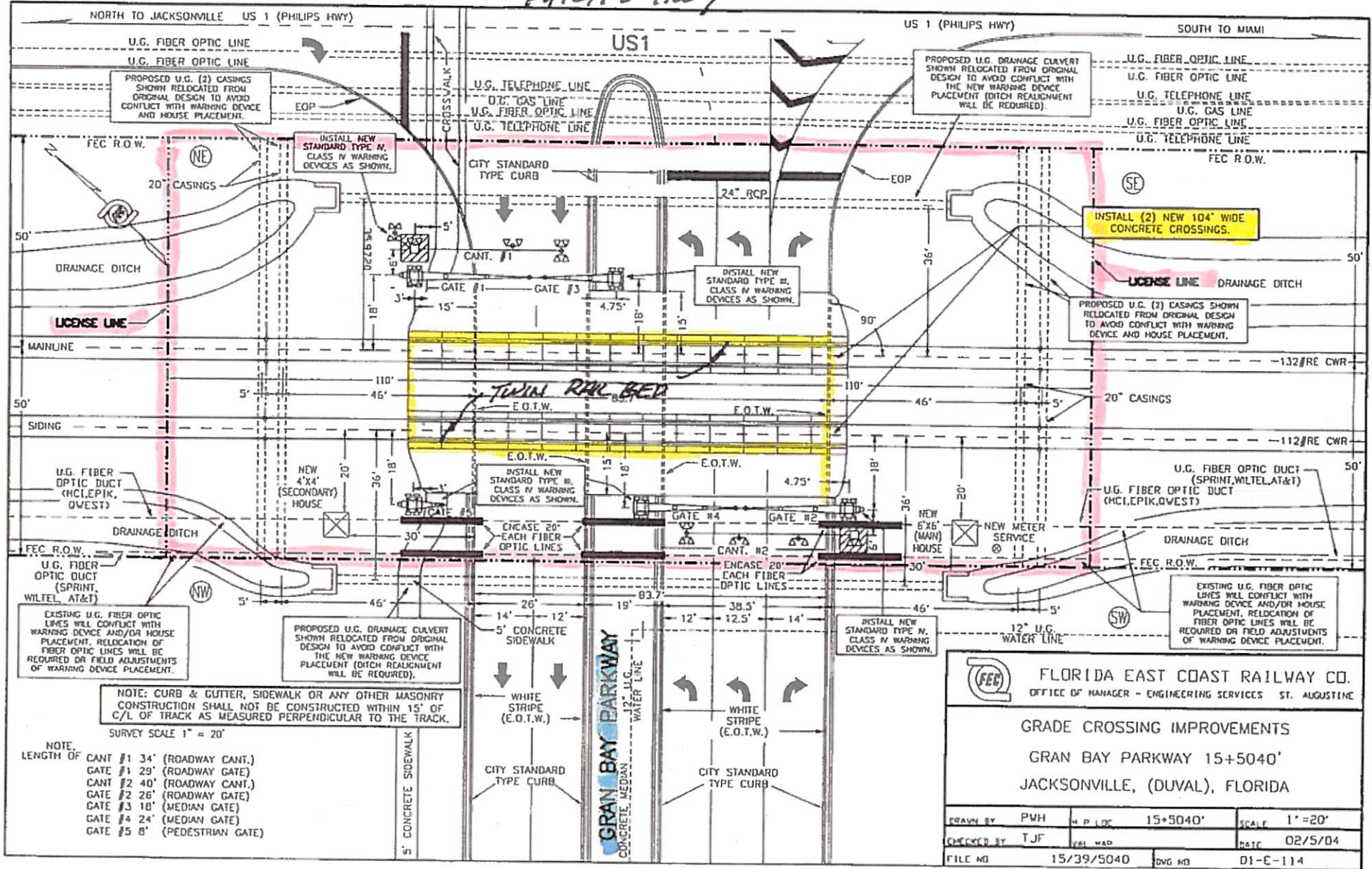


# GRAN BAY PARKWAY RR CROSSING SITE



PHILIPS HWY



**FEC** FLORIDA EAST COAST RAILWAY CO.  
OFFICE OF MANAGER - ENGINEERING SERVICES ST. AUGUSTINE

**GRADE CROSSING IMPROVEMENTS**  
GRAN BAY PARKWAY 15+5040'  
JACKSONVILLE, (DUVAL), FLORIDA

DRAWN BY	PWH	H.P. LOC	15+5040'	SCALE	1" = 20'
CHECKED BY	TJF	DATE	02/5/04		
FILE NO	15/39/5040	DWG NO	01-E-114		

- NOTE:  
LENGTH OF
- CANT #1 34' (ROADWAY CANT.)
  - GATE #1 29' (ROADWAY GATE)
  - CANT #2 40' (ROADWAY CANT.)
  - GATE #2 26' (ROADWAY GATE)
  - GATE #3 18' (MEDIAN GATE)
  - GATE #4 24' (MEDIAN GATE)
  - GATE #5 8' (PEDESTRIAN GATE)

NOTE: CURB & GUTTER, SIDEWALK OR ANY OTHER MASONRY CONSTRUCTION SHALL NOT BE CONSTRUCTED WITHIN 15' OF C/L OF TRACK AS MEASURED PERPENDICULAR TO THE TRACK.  
SURVEY SCALE 1" = 20'